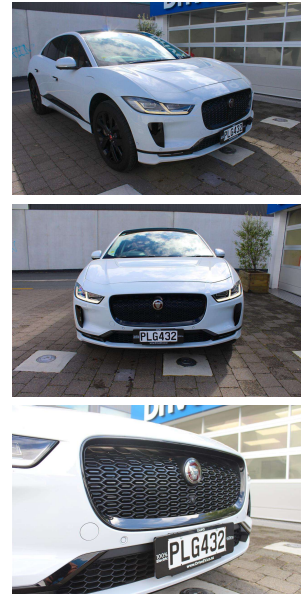
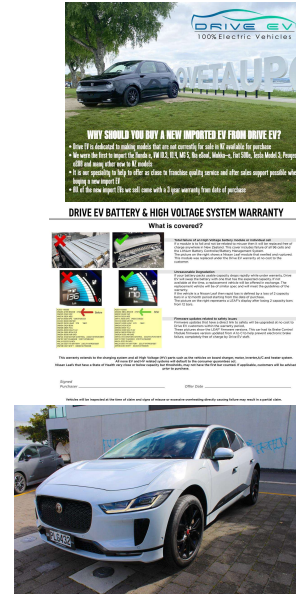


2019 Jaguar I-Pace HSE 90kWh AWD



VEHICLE INFORMATION

Cash Price

Includes GST,
Registration &
Licensing

\$84,990

Note: A Clean Car fee/rebate does
not apply to this vehicle

Finance this vehicle
from only

\$500.57

per week*

Total Amount Payable
\$104,118.85



New Zealand's Finance Company

Gain peace of mind
with Mechanical
Breakdown Insurance.
Ask us how.

Body

5 door, SUV / 4x4

Odometer

35,882 km

Engine

0 cc, Electric

Fuel Type

Electric

Transmission

Auto, All Wheel Drive

Wheels

-

VIN

SADHA2A13L1F80028

Reg No.

PLG432

Ext Colour

White

History

Ex-Overseas

Seats

5 seats

Interior

Brown, Leather

Audio

-

Stock ID

9710

Exterior Features

- » 100% Electric
- » 350kms Highway Range
- » 400kms Round Town Range
- » 90kWh Battery
- » Acceleration 0-100kph in 4.8 Sec
- » Active Battery Cooling
- » Adaptive Cruise Control
- » Adaptive LED headlights
- » Air Suspension
- » Blind spot monitoring
- » CHADEMO

Interior Features

- » 5 Star safety rating
- » Android Auto
- » Apple CarPlay
- » Child seat anchor points
- » Climate Control
- » Digital Display
- » ISOFIX
- » Leather Seats
- » Side airbags

Mechanical Features

- » ESP



Drive EV, Phone 07 3780082, Email steve@driveev.co.nz
60 Tuwharetoa Street, Taupo 3330, New Zealand
www.driveev.co.nz

* Finance calculation based on a 48 month term, no deposit and with an example annual fixed interest rate of 9.95%. Actual interest rate may be higher or lower. Includes an establishment fee of \$419.00 and a monthly maintenance fee of \$5.00. Full term total amount payable of \$104,118.85. Estimate only, not an offer of finance. Terms, conditions and lending criteria apply.